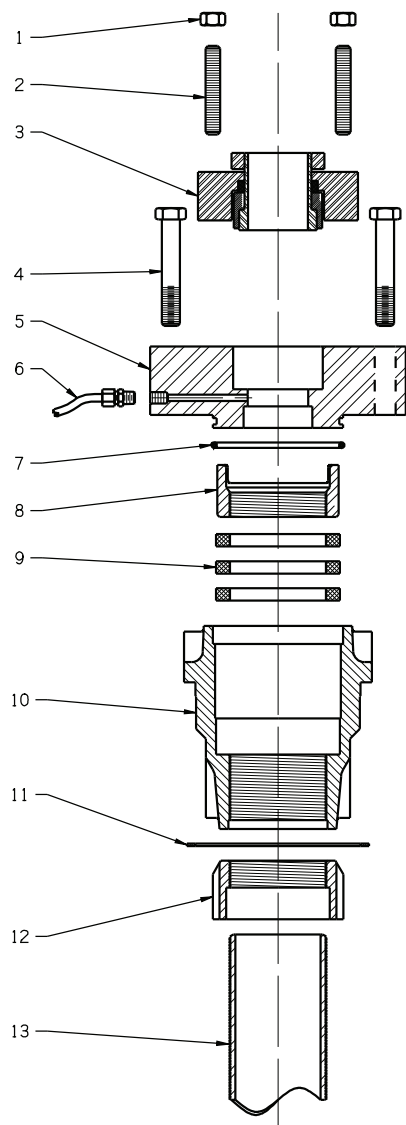
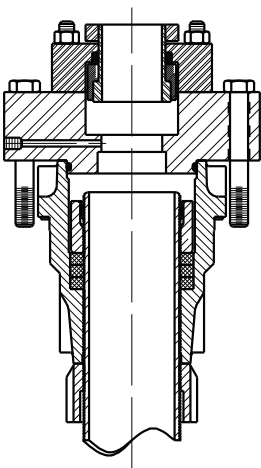


Water Flush Mechanical Seal
Stretch Housing
Stretch Assembly



DATE _____
DISTRIBUTOR _____
JOB _____
JOB/QUOTE # _____
UNIT QUANTITY _____



| Label | Part Name | Material |
|-------|----------------------------------|---|
| 1 | HEX NUT | COMMERCIAL 18-8 STAINLESS STEEL |
| 2 | THREADED STUDS | COMMERCIAL 18-8 STAINLESS STEEL |
| 3 | CARTRIDGE MECHANICAL SEAL | VARIOUS |
| 4 | CAP SCREWS | COMMERCIAL CARBON STEEL |
| 5 | WATER FLUSH PACKING PLATE | ASTM A240 GRADE 304L STAINLESS STEEL |
| 6 | FLUSH LINE ADAPTER | COMMERCIAL STAINLESS STEEL |
| 7 | WATER FLUSH PACKING PLATE O-RING | NITRILE |
| 8 | PACKING FOLLOWER | ASTM B584 C89833 BRONZE |
| 9 | PACKING RING | GRAPHITE |
| 10 | STRETCH HOUSING | ASTM A536 GRADE 65-45-12 DUCTILE IRON |
| 11 | STRETCH HOUSING GASKET | COPPER |
| 12 | STRETCH TUBE LOCK NUT | ASTM B584 C89833 BRONZE |
| 13 | STRETCH TUBE | ASTM A312 GRADE 304L STAINLESS STEEL (SCH 80) |