

# SIMFLO®

# THE SHC

SIMFLO's new SHC Discharge Head maintains existing core features while incorporating enhanced strength, accessibility and lifting capabilities.

- ALL DUCTILE IRON CONSTRUCTION
- 6", 8", 10" & 12" DESIGNS
- NEW ROBUST AND SECURE LIFTING DESIGN
- TWO LARGE, 2" THREADED ACCESS PORTS AT THE BASE FOR WELL ACCESS
- 150# AND 300# DISCHARGE FLANGE OPTIONS



AVAILABLE  
CERTIFIED TO  
NSF

Certified to  
NSF/ANSI/CAN 61  
& NSF/ANSI 372

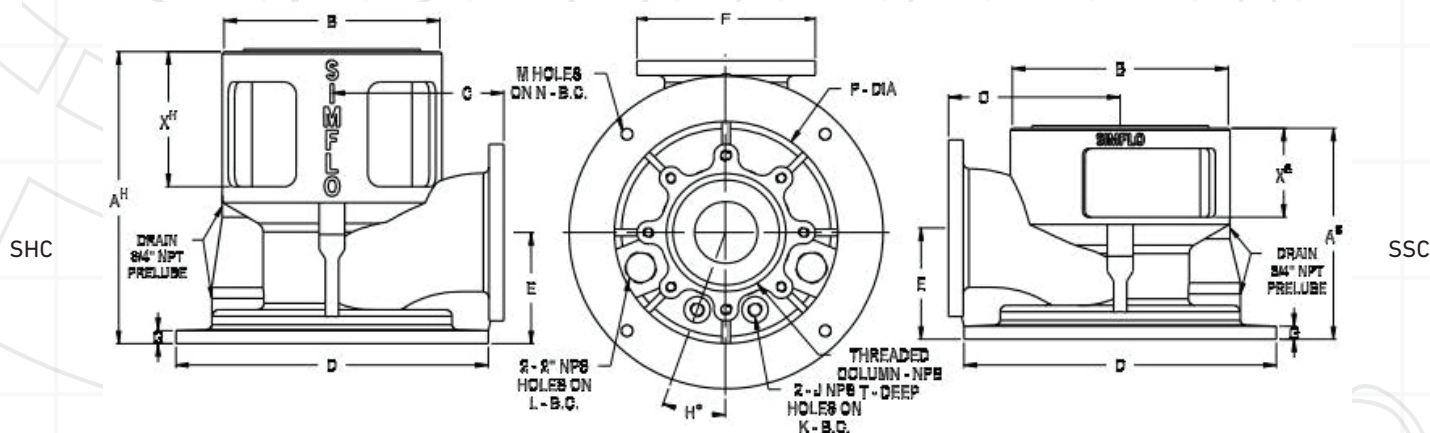


## FEATURES & BENEFITS

- STANDARDIZED GLAND BORE, OFFERING ENHANCED FLEXIBILITY AND AVAILABILITY
- INCREASED HEIGHT ABOVE THREADED ACCESS PORTS
- THREADED AND FLANGED COLUMN CONNECTION
- DUAL MOTOR REGISTER FOR 6" HEAD
- UV-RESISTANT POLYCARBONATE SAFETY GUARDS
- EASY ACCESS TO SERVICE GLAND ASSEMBLY VIA TALL WINDOW FEATURE

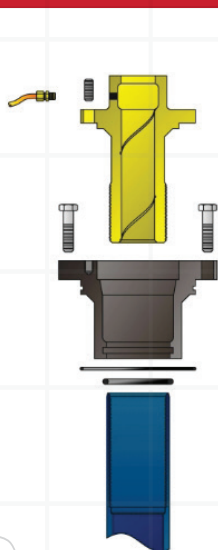
# THE SHC

# SIMFLO®

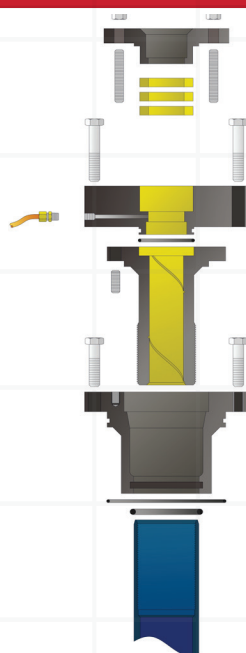


Model Number	Size	A	B	C	D	E	F	G	H	J	K	L	M	N	P	T	X
SHC-6	6	20.13	16.5	11.50	20.88	7.00	11.0	1.00	20.0	3/4	10.50	11.60	(4x) .75	18.75	14.50	1.75	11.63
SHC-8	8	22.31	16.5	13.13	23.88	8.50	13.5	1.00	20.0	3/4	13.00	14.00	(4x) .88	21.25	16.94	1.75	12.13
SHC-10	10	26.00	20.0	15.00	27.25	11.00	16.0	1.13	24.0	3/4	16.75	17.25	(4x) .88	25.00	20.50	2.50	13.25
SHC-12	12	30.50	24.5	18.00	32.00	12.00	19.0	1.25	30.0	1	18.00	19.00	(8x) 1.13	29.50	24.25	2.50	13.88

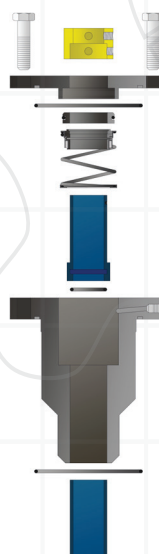
Model Number	Weight [lbf]	Discharge flange	Column type	Max Operating Hanging Wt. [lbf]	Max Lifting Load [lbf]	*Setting [ft]	Clevis Size [in]	Gr. A Clevis WLL [lbf/ea]	Gr. B Clevis WLL [lbf/ea]
SHC-6	300	150/300#	Threaded / Flanged	150000	72000	1500	1-1/4	24000	36000
SHC-8	375	150/300#	Threaded / Flanged	165000	84000	1800	1-3/8	27000	42000
SHC-10	590	150/300#	Threaded / Flanged	350000	140000	2000	1-5/8	40000	70000
SHC-12	785	150#	Threaded / Flanged	415000	140000	1500	1-5/8	40000	70000



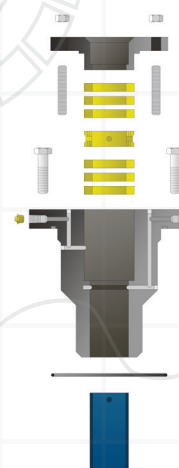
OIL LUBE TENSION NUT ASSEMBLY



WATER FLUSH PACKING GLAND TENSION NUT ASSEMBLY



COMPONENT MECHANICAL SEAL ASSEMBLY



PACKING GLAND SEAL ASSEMBLY



**LEARN  
MORE**

